



Security Removable Media Manager

Excel AddIn

Version 9.11.27.0

(April 2024)

Protect your valuable data



secRMM Excel AddIn Administrator Guide

© 2011 Squadra Technologies, LLC. ALL RIGHTS RESERVED.

This guide contains proprietary information protected by copyright. The software described in this guide is furnished under a software license or nondisclosure agreement. This software may be used or copied only in accordance with the terms of the applicable agreement. No part of this guide may be reproduced or transmitted in any form or by any means, electronic or mechanical, including photocopying and recording for any purpose other than the purchaser's personal use without the written permission of Squadra Technologies, LLC.

If you have any questions regarding your potential use of this material, contact:

Squadra Technologies, LLC
7575 West Washington Ave
Suite 127-252
Las Vegas, NV 89128 USA
www.squadratechnologies.com
email: info@squadratechnologies.com

Refer to our Web site for regional and international office information.

TRADEMARKS

Squadra Technologies, secRMM are trademarks and registered trademarks of Squadra Technologies, LLC. Other trademarks and registered trademarks used in this guide are property of their respective owners.

Disclaimer

The information in this document is provided in connection with Squadra Technologies products. No license, express or implied, by estoppel or otherwise, to any intellectual property right is granted by this document or in connection with the sale of Squadra Technologies products. EXCEPT AS SET FORTH IN Squadra Technologies's TERMS AND CONDITIONS AS SPECIFIED IN THE LICENSE AGREEMENT FOR THIS PRODUCT, Squadra Technologies ASSUMES NO LIABILITY WHATSOEVER AND DISCLAIMS ANY EXPRESS, IMPLIED OR STATUTORY WARRANTY RELATING TO ITS PRODUCTS INCLUDING, BUT NOT LIMITED TO, THE IMPLIED WARRANTY OF MERCHANTABILITY, FITNESS FOR A PARTICULAR PURPOSE, OR NON-INFRINGEMENT. IN NO EVENT SHALL Squadra Technologies BE LIABLE FOR ANY DIRECT, INDIRECT, CONSEQUENTIAL, PUNITIVE, SPECIAL OR INCIDENTAL DAMAGES (INCLUDING, WITHOUT LIMITATION, DAMAGES FOR LOSS OF PROFITS, BUSINESS INTERRUPTION OR LOSS OF INFORMATION) ARISING OUT OF THE USE OR INABILITY TO USE THIS DOCUMENT, EVEN IF Squadra Technologies HAS BEEN ADVISED OF THE POSSIBILITY OF SUCH DAMAGES. Squadra Technologies makes no representations or warranties with respect to the accuracy or completeness of the contents of this document and reserves the right to make changes to specifications and product descriptions at any time without notice. Squadra Technologies does not make any commitment to update the information contained in this document.

Squadra Technologies Excel AddIn Administrator Guide
Created - August 2011

Contents

INTRODUCTION	5
INSTALLATION	5
PREREQUISITES	5
START EXCEL IN ADMINISTRATOR MODE	5
SET EXCEL SECURITY SETTINGS	7
<i>Excel Trusted Locations</i>	8
<i>Excel Macro Settings</i>	11
DOWNLOAD THE XLSX FILE FROM THE SQUADRA TECHNOLOGIES WEB SITE	13
<i>Opening secRMMExcelWorkbook.xlsx for the first time</i>	13
<i>Initializing secRMMExcelWorkbook.xlsx</i>	18
INSTALL SECMMM EXCEL ADDIN WITHOUT USING CLICKONCE (I.E. OVER THE INTERNET)	19
TROUBLESHOOTING	19
UNINSTALLING	21
USING THE SECMMM EXCEL ADDIN	22
SECURITY CONSIDERATIONS	22
SECMMM EXCEL ADDIN RIBBON (TOOLBAR)	22
<i>Data source</i>	23
secRMM Checkbox	23
secRMMCentral Checkbox	23
Archive Checkbox	24
SCCM Status Messages Checkbox	24
Azure Log Checkbox	24
Connect to another computer	24
<i>Control</i>	27
Get existing data button	27
Get existing data filtered	27
Clear Worksheet button	27
Get existing data from multiple computers	27
Receive new events Checkbox	28
Freeze button	28
Charts button	28
<i>Administration</i>	28
Authorization button	29
<i>Filter</i>	30
Event types	30
All Checkbox	30
Online/Offline Checkbox	30
Writes Checkbox	30
Write Authorization failures Checkbox	30
Administration Checkbox	31

secRMM Excel AddIn Administrator Guide

SafeCopy Checkbox.....	31
Detail level.....	31
Simple Checkbox.....	31
Detailed Checkbox.....	31
SECMM EXCEL DATA COLUMNS.....	31
CONTACTING SQUADRA TECHNOLOGIES SUPPORT.....	33
ABOUT SQUADRA TECHNOLOGIES, LLC.....	33

secRMM Excel AddIn Administrator Guide

Introduction

The secRMM Excel AddIn is a “Microsoft Office Excel Document AddIn”. It works with all versions of Office from Office 2010 or better. Using Excel against the secRMM event log data makes it easy to analyze the data interactively and to create reports. The secRMM Excel AddIn can be used to view the secRMM event log data for just a single computer or for all the systems running the secRMM solution (i.e. secRMMCentral) in your environment.

The “Microsoft Office Excel Document AddIn” technology is provided by Microsoft to allow their Office suite to be customized to meet a specific task. It is a very powerful Microsoft technology. If you follow the steps in this document, it should take no more than 20 minutes to be up and running.

Please follow the steps in the next section to begin the installation.

Installation

If you have not already done so, please install Excel 2010 or better.

Prerequisites

The following Windows feature must be installed:

1. Microsoft .NET Framework 3.5

If you are running in an air-gapped/SCIF environment and therefore have a Windows installation CD/DVD, please follow the instructions at:

<https://learn.microsoft.com/en-us/windows-hardware/manufacture/desktop/deploy-net-framework-35-by-using-deployment-image-servicing-and-management--dism?view=windows-11> and follow the section titled ‘Using DISM with no Internet connectivity’

The following 2 Excel features must be installed in addition to the base Excel product:

1. “.Net programmability support” and
2. “Visual Basic for Applications”

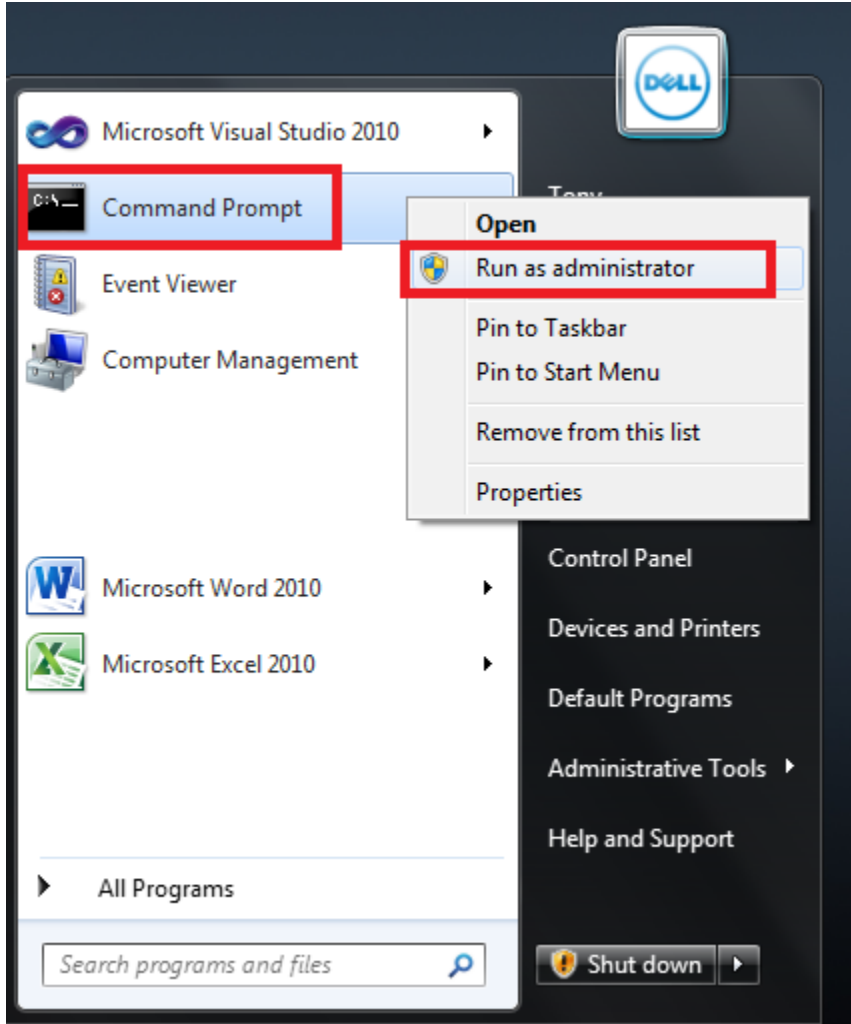
Note: “.Net programmability support” is a default feature so if it is not installed, you should check with your security department as to why it has been disabled intentionally before you enable it.

Note: “Visual Basic for Applications” is not used by the secRMM Excel AddIn, however, it is required by the Excel AddIn Framework.

Start Excel in Administrator Mode

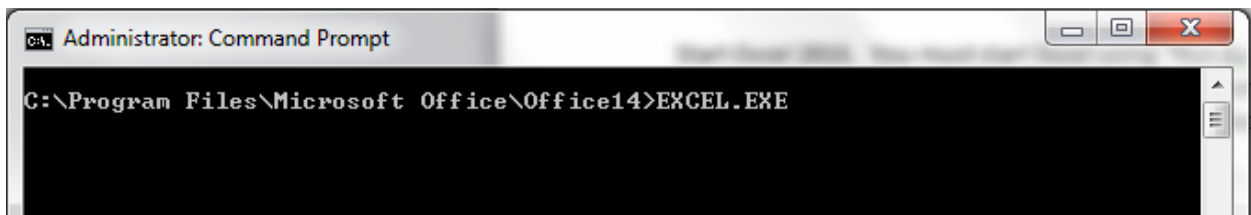
Whenever you want to use the secRMM Excel AddIn, you must start Excel using “Run As Administrator” mode. The easiest way to do this is to execute a “Command Prompt” session using “Run As administrator”. To get the “Run as administrator” option displayed, right mouse click on the “Command Prompt” menu item.

secRMM Excel AddIn Administrator Guide



1 - Invoke the "Command Prompt" in "Run as administrator" mode

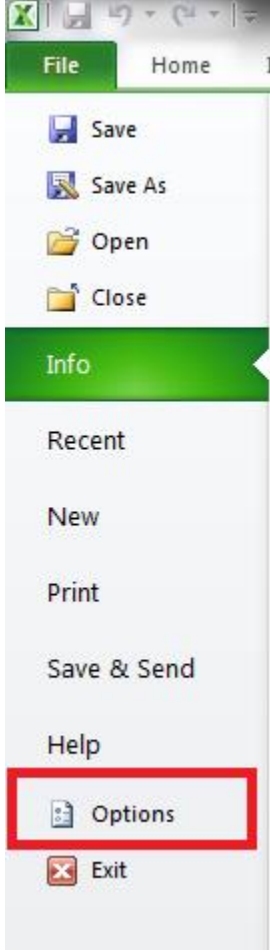
From the "Administrator: Command Prompt", run EXCEL.EXE.



2 - Calling EXCEL.EXE from a "Command Prompt" in "Run as administrator" mode

Once Excel is open, perform the following steps below. You only need to perform these steps one time. In other words, when you close Excel and then open it again, the settings you set in the steps below will be set.

Set Excel security settings

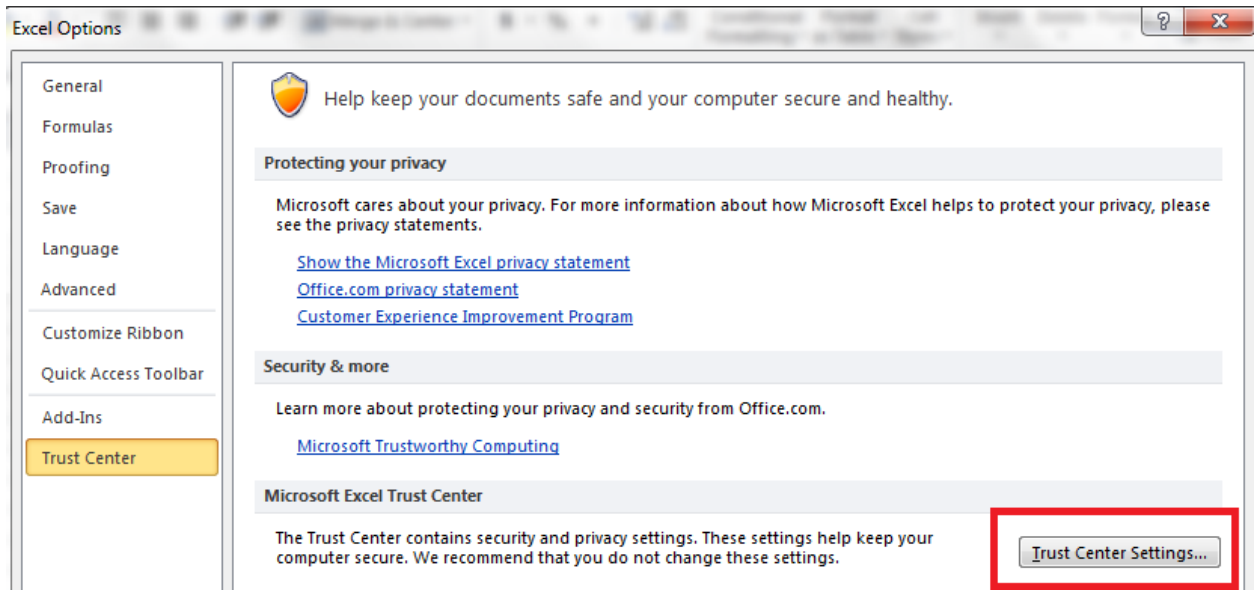
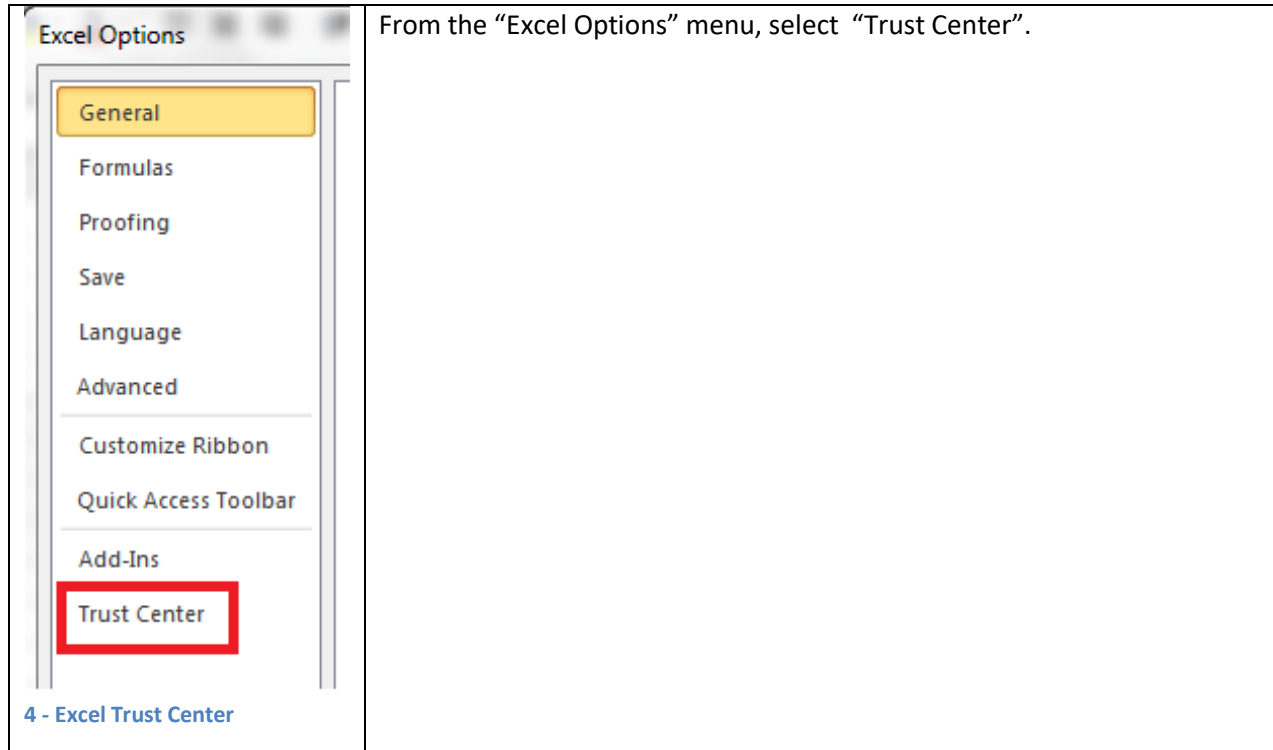


From the "Excel File" menu, select "Options".

The screenshot shows the Microsoft Excel application window with the 'File' menu open. The 'Options' menu item is highlighted with a red rectangular box. The menu items visible are: Save, Save As, Open, Close, Info, Recent, New, Print, Save & Send, Help, Options, and Exit.

[3 - Excel Options](#)

secRMM Excel AddIn Administrator Guide

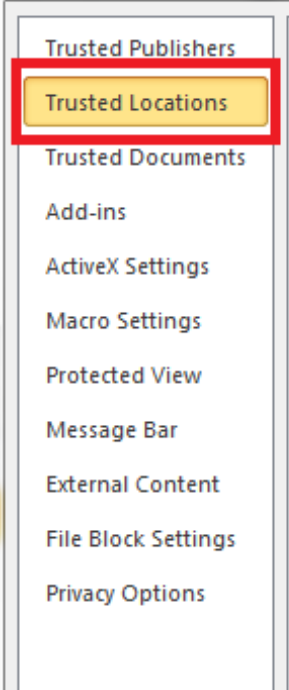


Click the “Trust Center Settings...” button in the lower right hand corner of the “Excel Options” window.

Excel Trusted Locations

secRMM Excel AddIn Administrator Guide

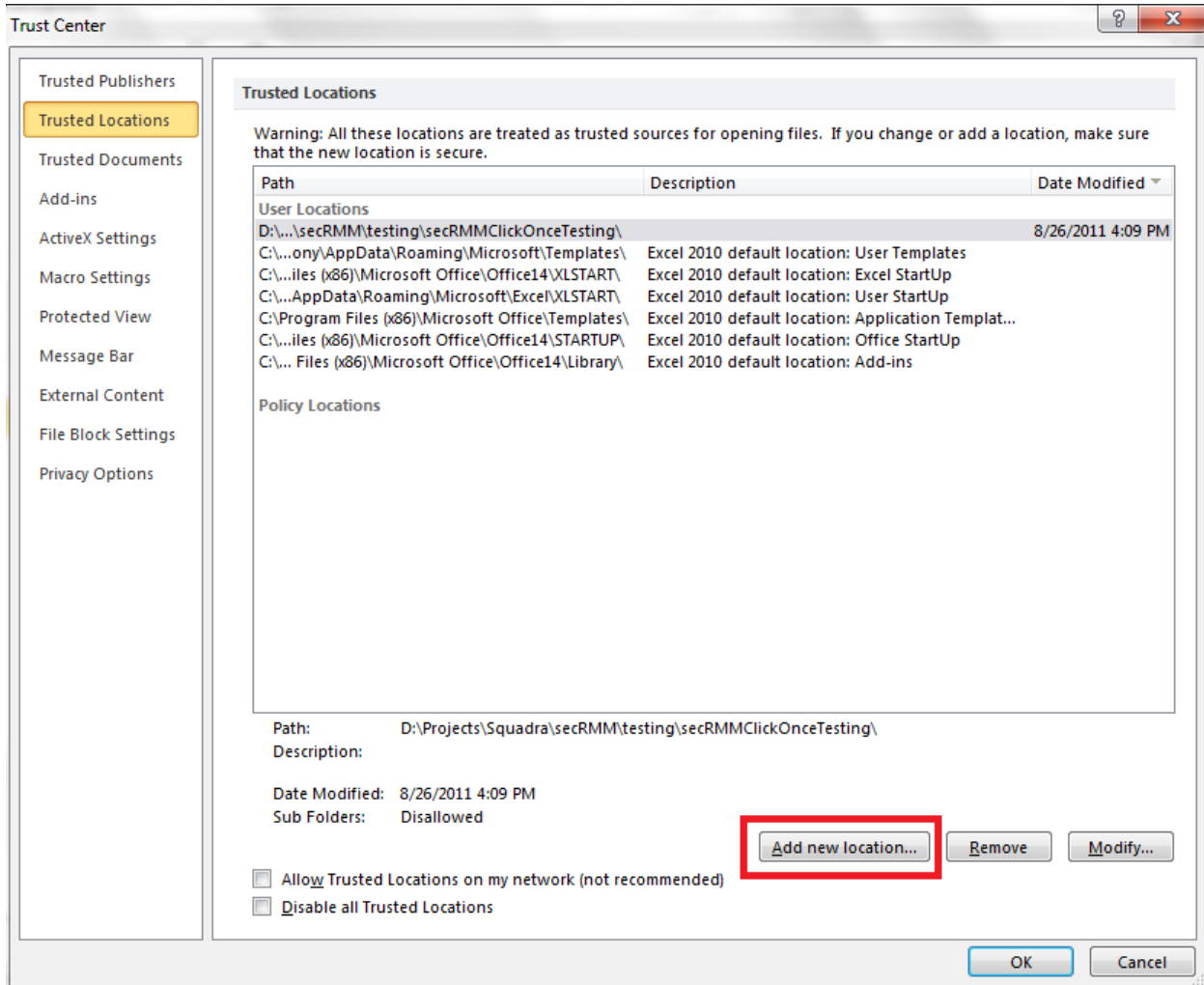
From the "Trust Center" Options menu, select "Trusted Locations".



The screenshot shows the Trust Center Options menu with the following items listed from top to bottom: Trusted Publishers, Trusted Locations (highlighted with a red box), Trusted Documents, Add-ins, ActiveX Settings, Macro Settings, Protected View, Message Bar, External Content, File Block Settings, and Privacy Options.

6 - Excel Trusted Locations

secRMM Excel AddIn Administrator Guide



7 - Excel Trusted Locations dialog

You have to save the excel file for secRMM (named secRMMExcelWorkBook.xlsx) to one of the paths in the “Trusted Locations” list. So you can either add a new path (by clicking the “Add new location...” button) to the trusted locations list or just use one of the existing trusted locations paths already in the trusted locations list. Remember the path you chose in this step because when you download the secRMMExcelWorkbook.xlsx Excel file from the Squadra Technologies web site (performed in a step below), you will want to save it to the path you chose in this step.

One very important decision about selecting the “Trusted Locations” path for the secRMMExcelWorkBook.xlsx is integration with the secRMM Microsoft Management Console (MMC). If you add your “Trusted Locations” path as the AdminUtils subdirectory of secRMM (if you installed secRMM to the default directory, this will be C:\Program Files\secRMM), then you can directly launch the Excel (and the secRMM Excel AddIn) right from within the secRMM MMC. Therefore, you will add **C:\Program Files\secRMM\AdminUtils** to the Excel “Trusted Locations”. This is shown in the screenshot below.

secRMM Excel AddIn Administrator Guide

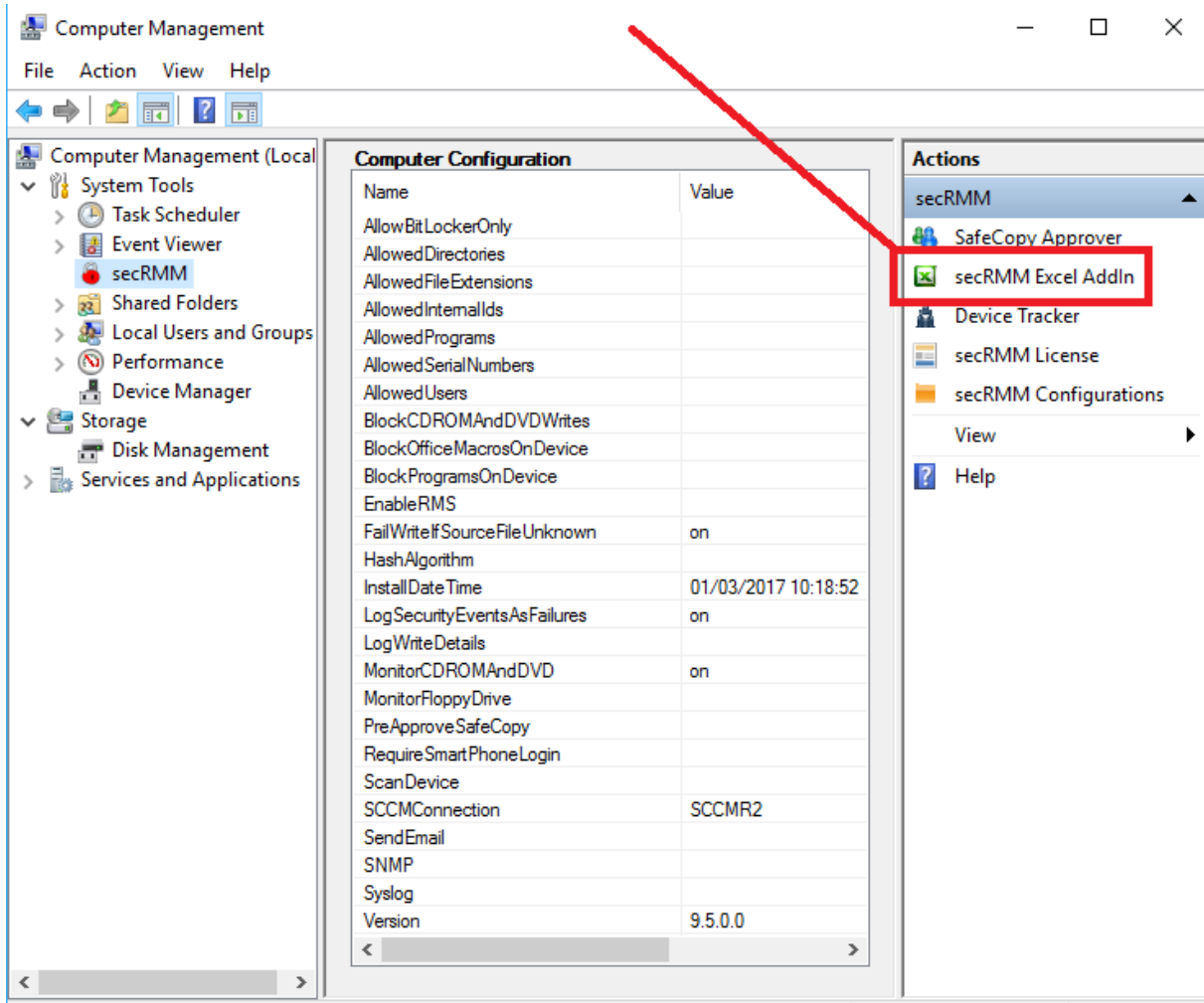
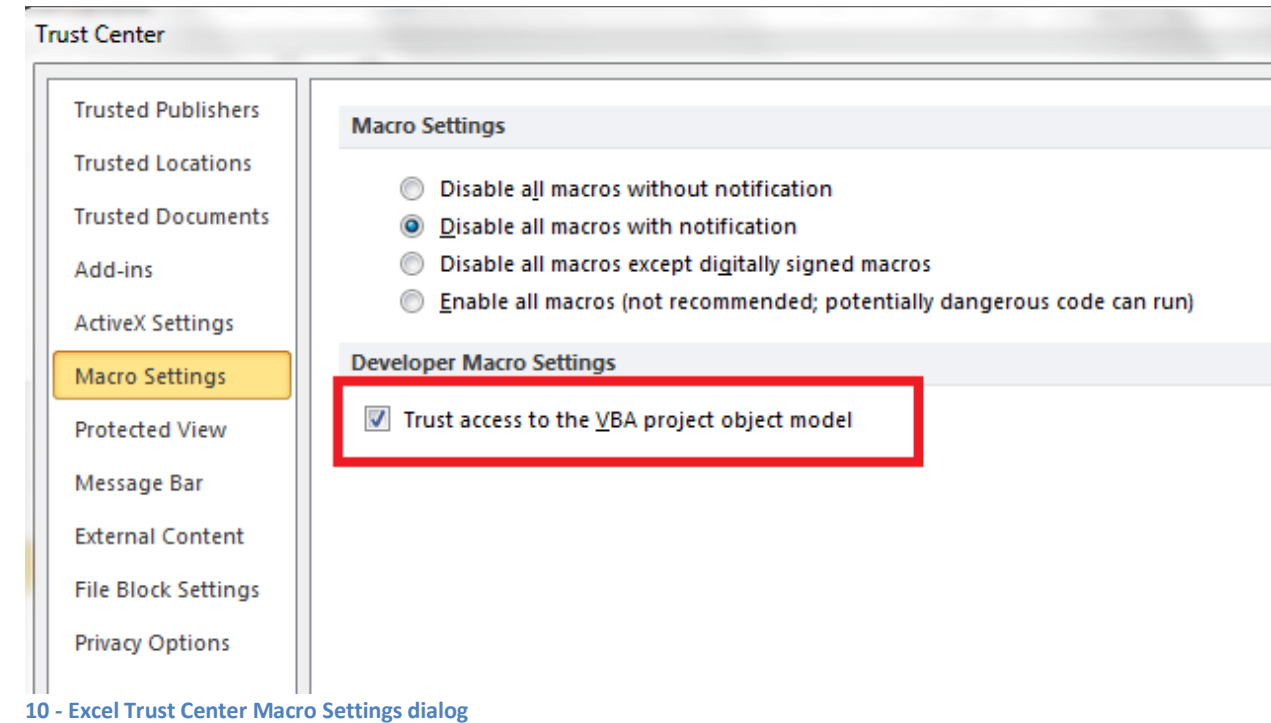
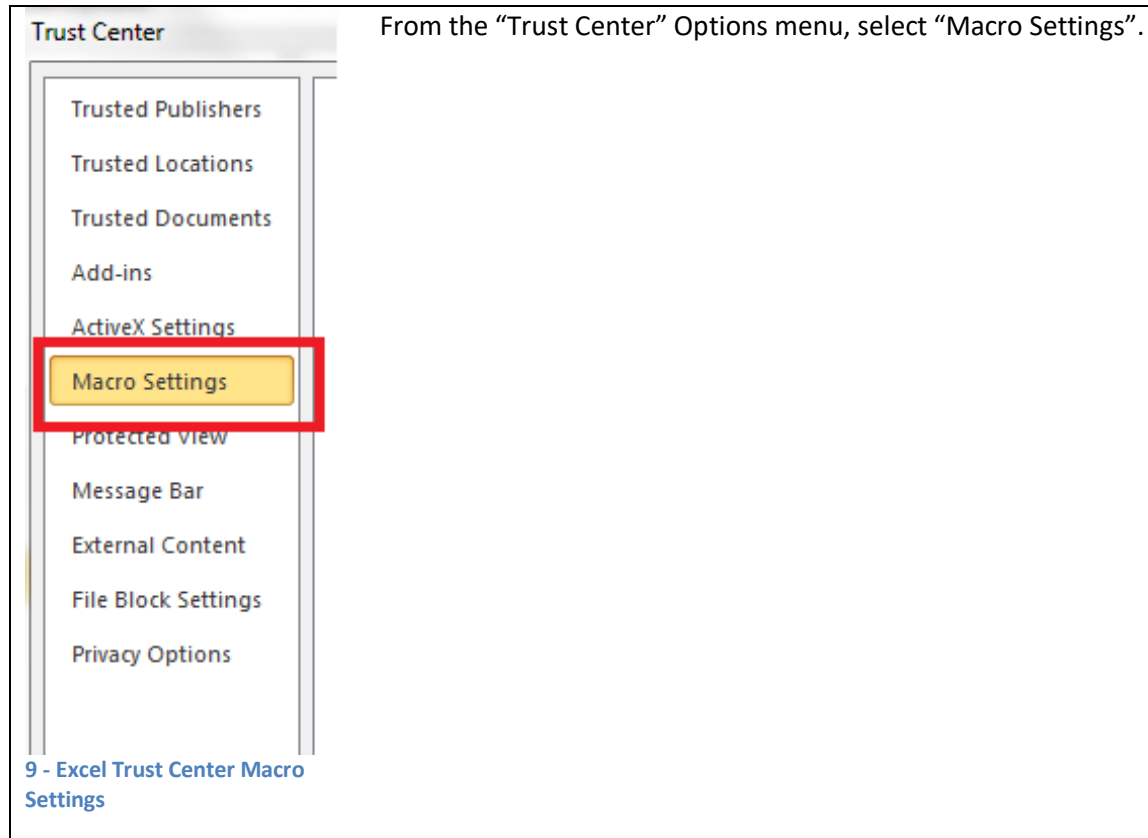


Figure 8 - Integrating the secRMM Excel AddIn into the MMC Console

Excel Macro Settings



secRMM Excel AddIn Administrator Guide

You have to check “Trust access to the VBA project object model” last checkbox on “Macro Settings” tab. The secRMM Excel AddIn does not use VBA Macros but the Excel AddIn Framework does.

Once you have performed the steps above, exit Excel (this will save the changes you just made). Now start Excel again in Administrator mode to perform the steps in the next sections.

Download the xlsx file from the Squadra Technologies web site

Now go to the Squadra Technologies web page

<http://www.squadratechnologies.com/Products/secRMM/secRMMDownloads.aspx>.

On this web page, please fill in your email and click submit. You will be redirected to the download page. On this page, please click the “Additional optional downloads”. On that page, click the “secRMMExcelAddIn” link. You will now be on the secRMM Excel AddIn download page. Download the Excel Workbook into the path you specified in the “Excel Trusted Locations” section above.

Please select a link(s) from the list below.

Item	Download link
Excel 2010 secRMM Workbook	secRMMExcelWorkbook.xlsx
Administrators Guide	secRMMExcelAddInAdministratorGuide.pdf left click to view online right click and then "Save As" to download

11 - secRMM Excel AddIn web site download page

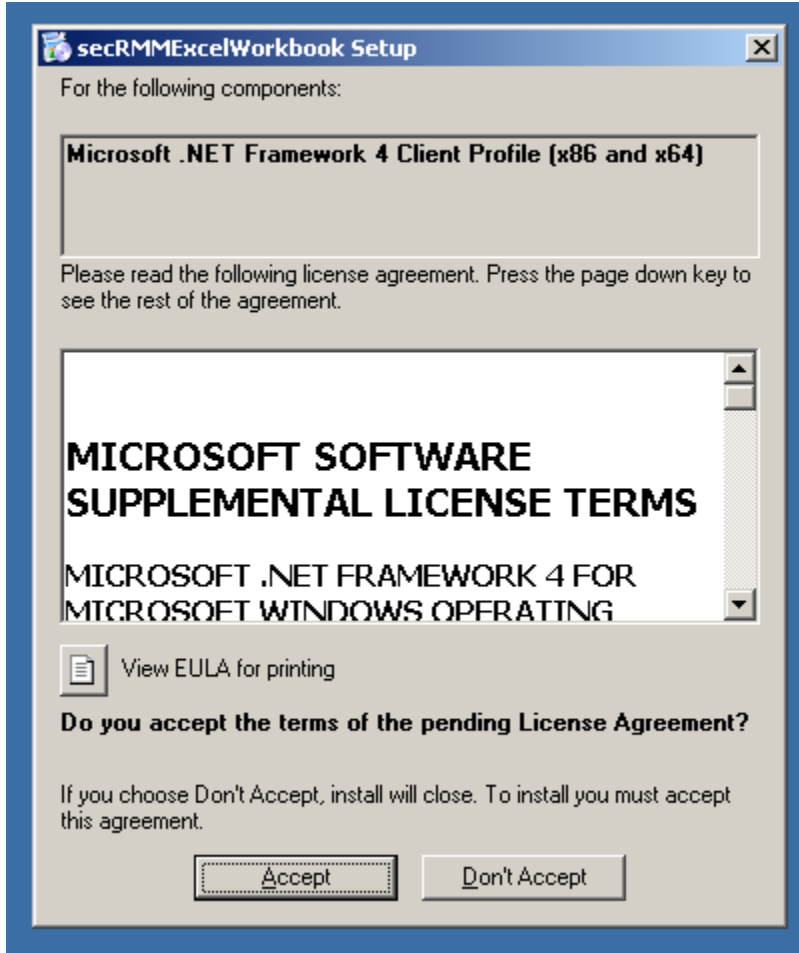
Opening secRMMExcelWorkbook.xlsx for the first time

When you open the secRMMExcelWorkbook.xlsx for the first time, the Excel program will need to install the Microsoft Office Excel AddIns.

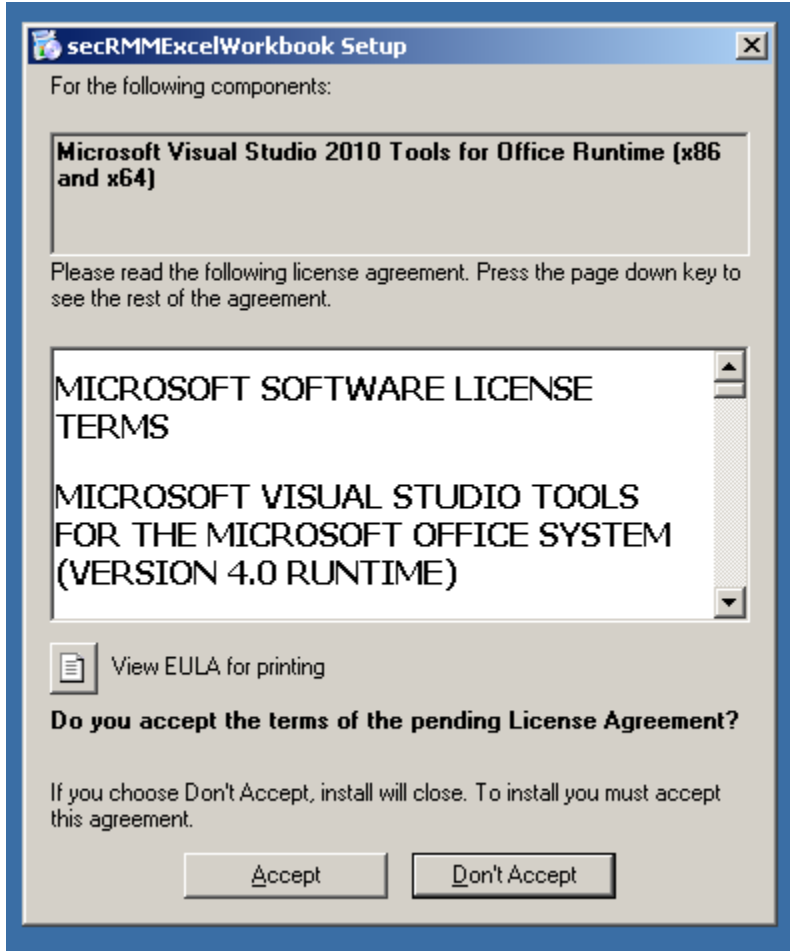
Microsoft Office Excel AddIns use the following Windows components:

1. Microsoft .NET Framework 4.5 (x86 and x64)
2. Microsoft Visual Studio Tools for Office Runtime (x86 and x64)

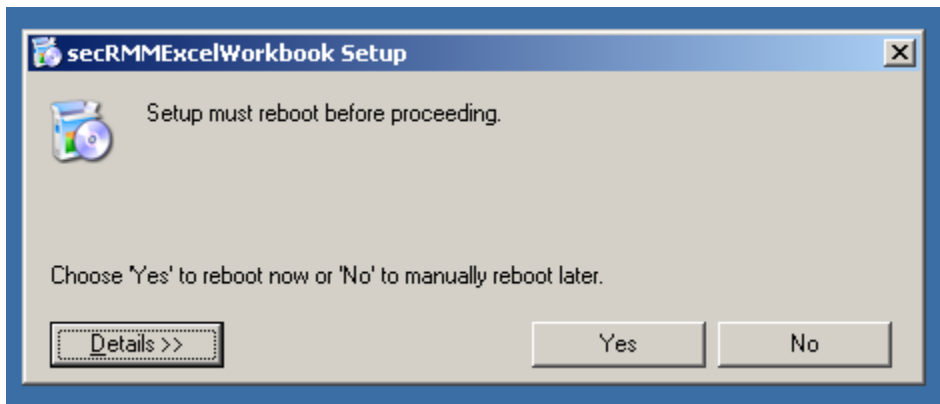
You will see the following screenshots below. Don't worry if one of the screenshots is not shown for your installation, this means that the Windows component is already installed on your computer.



12 - Installing Microsoft .NET Framework 4 Client Profile (x86 and x64)

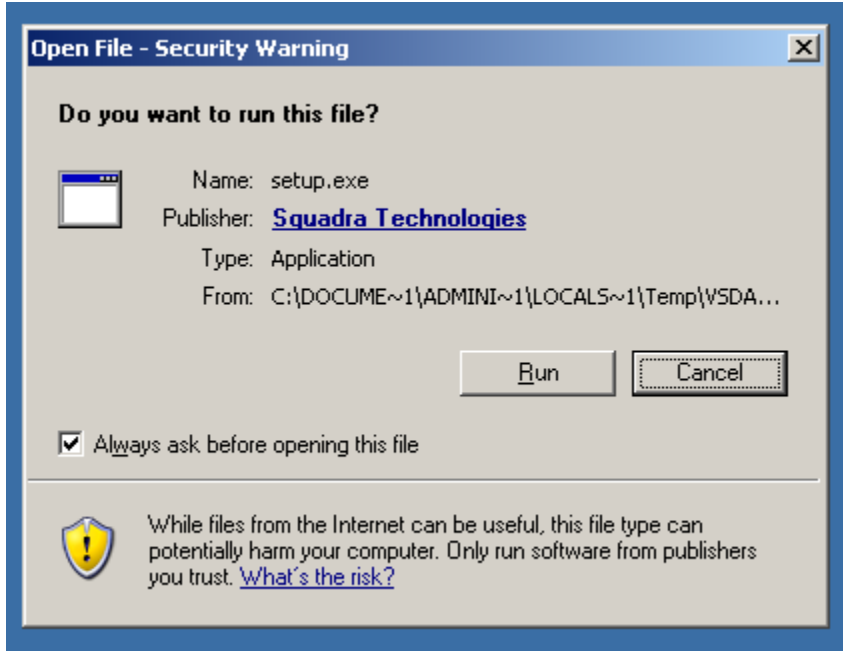


13 - Installing Microsoft Visual Studio Tools for Office Runtime (x86 and x64)

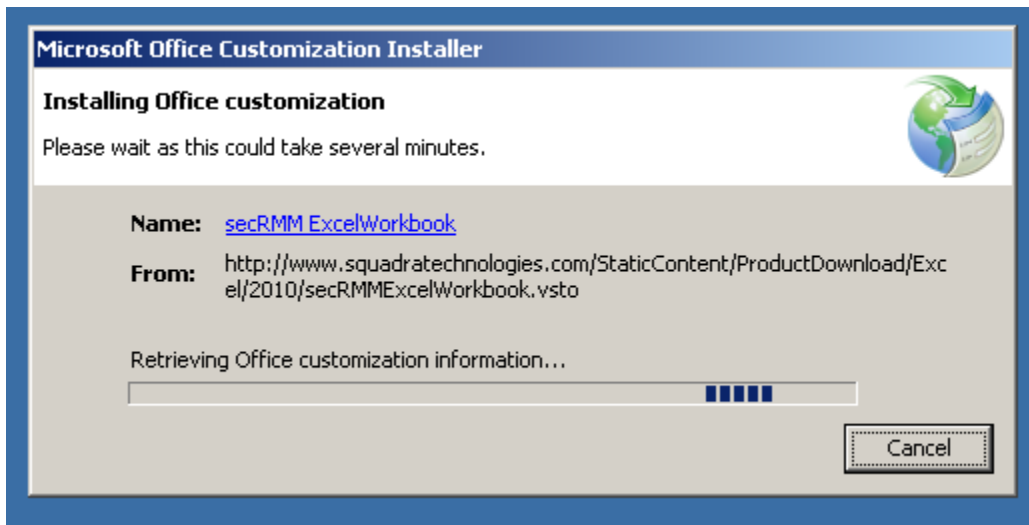


14 - Reboot dialog if no .NET 3.5 found

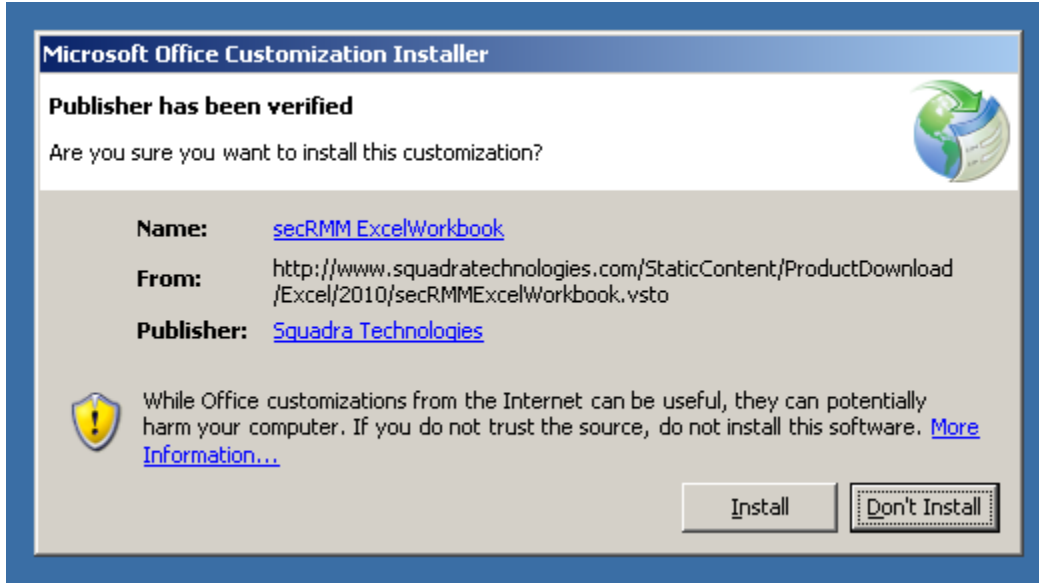
If you get this window, reboot the computer by clicking the Yes button.



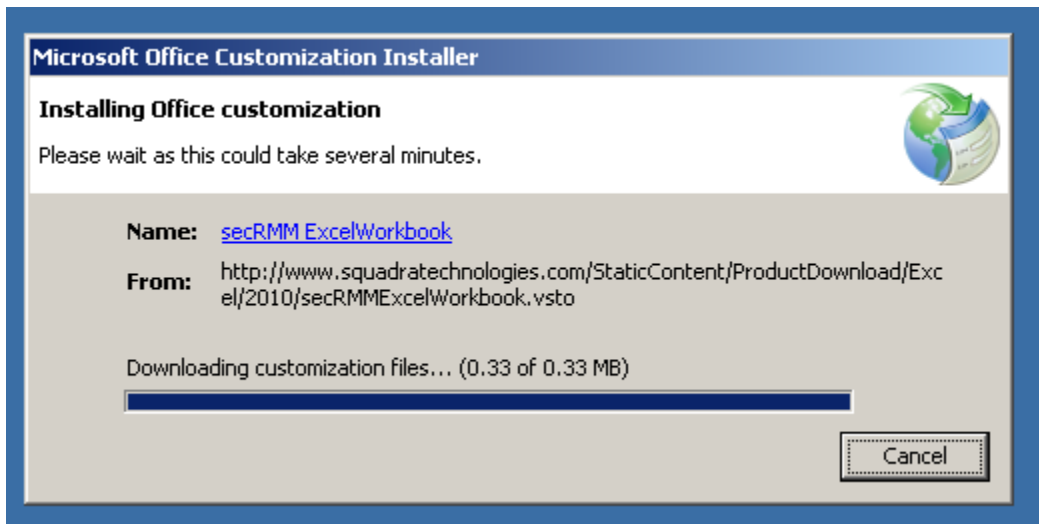
15 - Restarting install after reboot



16 - Download from web site

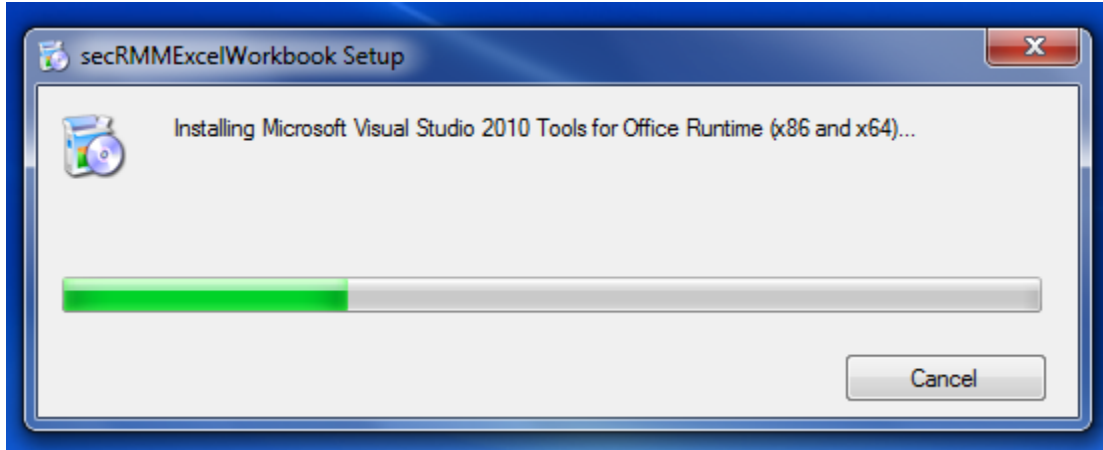


19 - Starting Microsoft Office Customization Installer

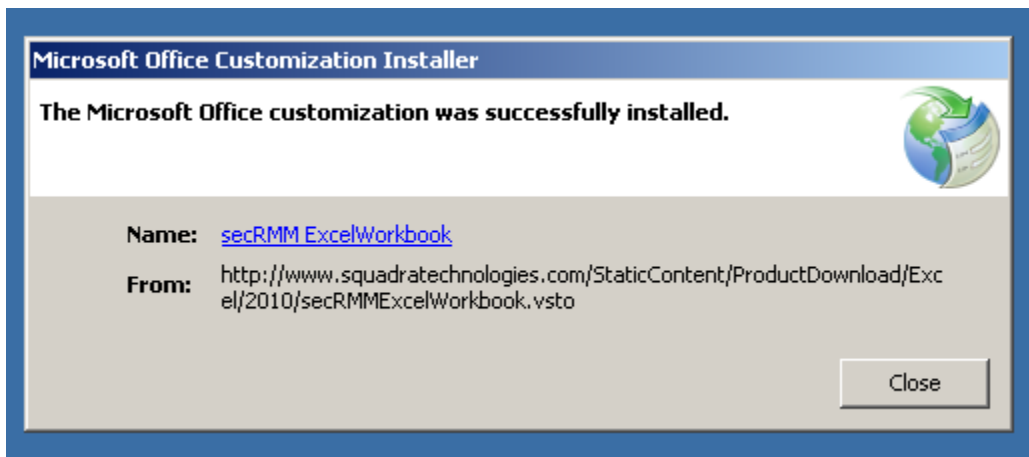


17 - Downloading from web site

secRMM Excel AddIn Administrator Guide



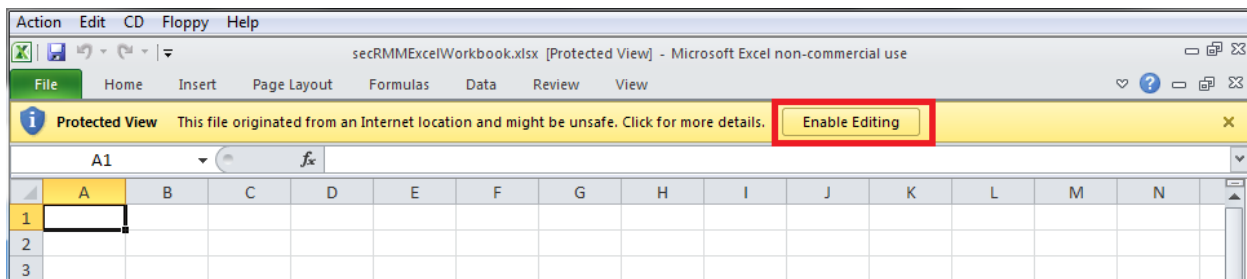
18 - Installation progress bar



19 - Successful installation message

Initializing secRMMExcelWorkbook.xlsx

If the secRMMExcelWorkbook.xlsx opens in “Protected View”, please click the “Enable Editing” button.

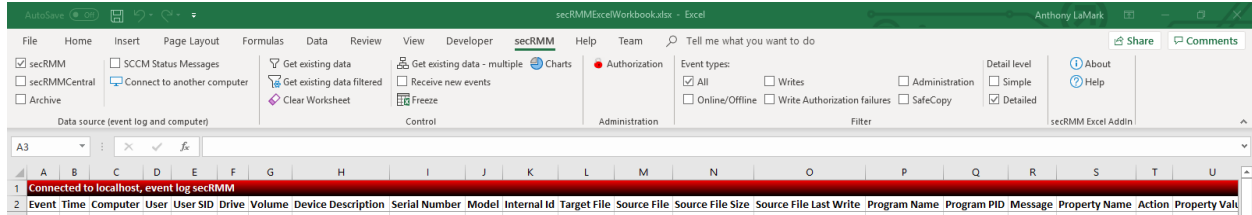


20 - Enable Editing within Excel

The secRMMExcelWorkbook will now initialize. Once the secRMMExcelWorkbook completes its initialization, row 2 of the active Worksheet will have the secRMM header and the secRMM Ribbon (toolbar) will be displayed above the Worksheet area. You are now ready to begin using the

secRMM Excel AddIn Administrator Guide

secRMMExcelWorkbook. Please continue on to the section below titled “Using the secRMM Excel AddIn”. If you do not see the secRMM header in row 1 of the active Worksheet and/or you do not see the secRMM Ribbon, please review the Troubleshooting section directly below.




21 - secRMM Excel Workbook initialized

Install secRMM Excel Addin without using ClickOnce (i.e. over the Internet)

Starting with release 9.11.15.0 (April 2023), you can now download a standalone installation of the secRMM Excel Addin. This is for computers that do not have an internet connection or environments that do not allow the Microsoft ClickOnce technology. Please download the secRMMExcelAddIn.zip (note that the zip file name contains the version number in it) as shown in the screenshot below.

secRMM Excel AddIn

- Overview
- Download
- Documentation
- Video
- Blogs
- Screenshots
- Features
- Release Notes
- Pricing



Home >> secRMM >> Downloads >> secRMM Excel Addin

The secRMM Excel Addin gives you an additional tool to view Removable Media Events in addition to the Windows security event log. The secRMM Excel Addin is useful for analyzing the data interactively and also for generating reports.

The secRMM Excel Addin works with a single secRMM event log and with **secRMMCentral** (which is a central repository of all the secRMM events from all systems).

Getting started is easy. Simply download the files below and then follow the steps in the secRMM Excel Addin Administrator Guide (the 2nd link below).

Please select a link(s) from the list below

Item	Download link
Excel secRMM Workbook	secRMMExcelWorkbook.xlsx
Excel secRMM Addin (standalone install)	secRMMExcelAddin_9_11_15_0.zip
Administrators Guide	secRMMExcelAddinAdministratorGuide.pdf left click to view online right click and then "Save As" to download

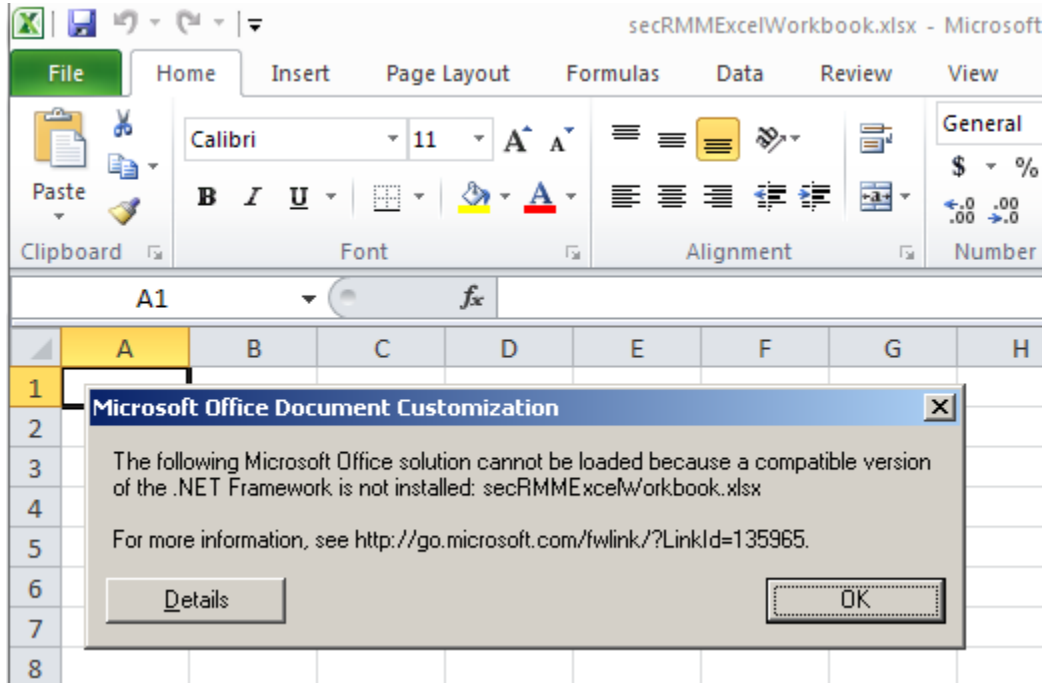
Troubleshooting

Use the installed programs list to ensure the following are in the list.

secRMM Excel AddIn Administrator Guide

Microsoft Visual Studio 2010 Tools for Office Runtime (x64)	Microsoft Corporation	6/30/2011		10.0.31117
Microsoft Office 2010 Primary Interop Assemblies	Microsoft Corporation	8/26/2011	6.72 MB	14.0.4763.1024
Microsoft .NET Framework 4 Client Profile	Microsoft Corporation	2/11/2011	38.8 MB	4.0.30319
secRMM ExcelWorkbook	Squadra Technologies	8/26/2011		1.0.0.0

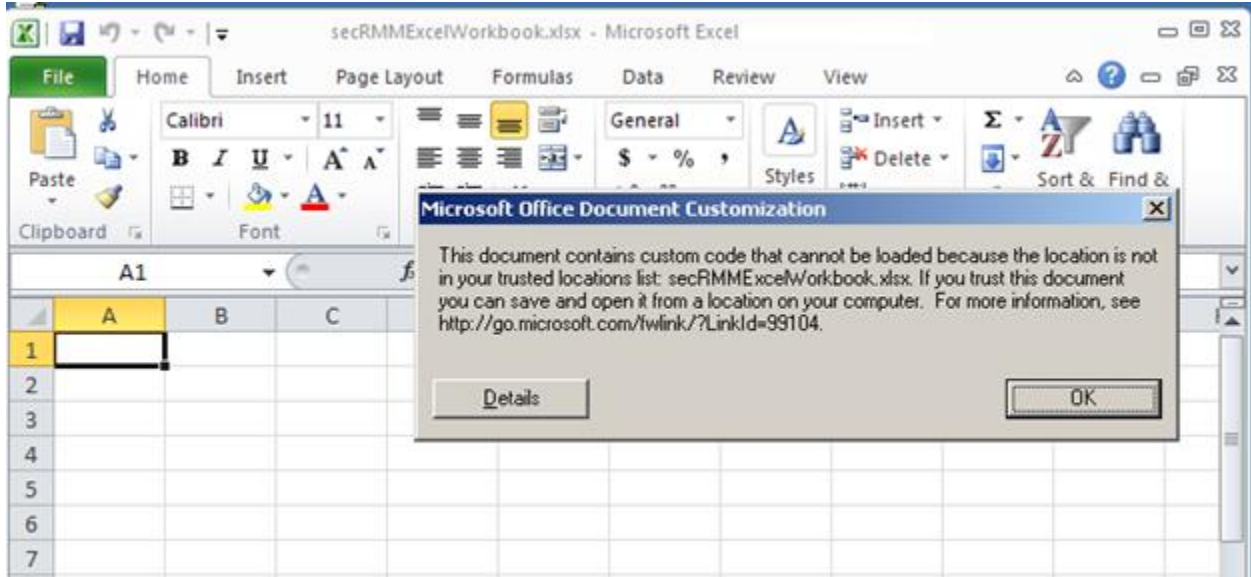
22 - Installed components



23 - Missing .NET Framework 4.5

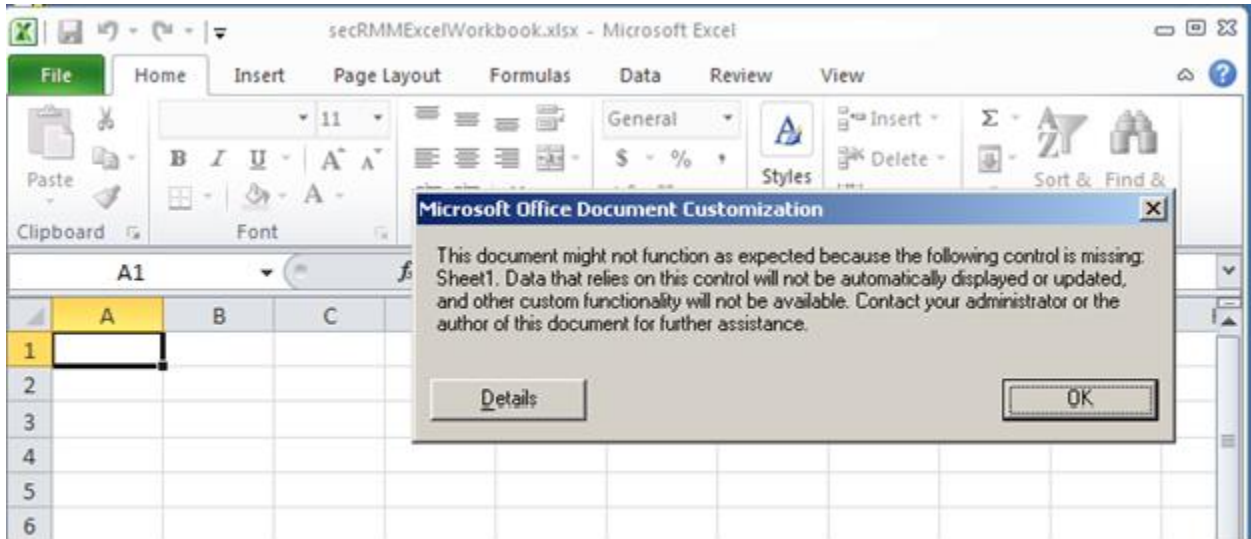
If you receive the message above, you need to install the .Net 4.5 Framework.

secRMM Excel AddIn Administrator Guide



24 - Missing entry in the Excel Trust locations

If you receive the message above, you have not added the path where the Excel file secRMMExcelWorkbook.xlsx is to the Excel Trust locations.



25 - Missing "Trust access to the VBA project object mode" Excel security setting

If you receive the message above, you have not enabled the "Trust access to the VBA project object model" Excel security setting.

Uninstalling

If you need or want to uninstall the secRMM Excel AddIn, you can do so from the Control Panel->Add/Remove Programs as shown below.

secRMM Excel AddIn Administrator Guide

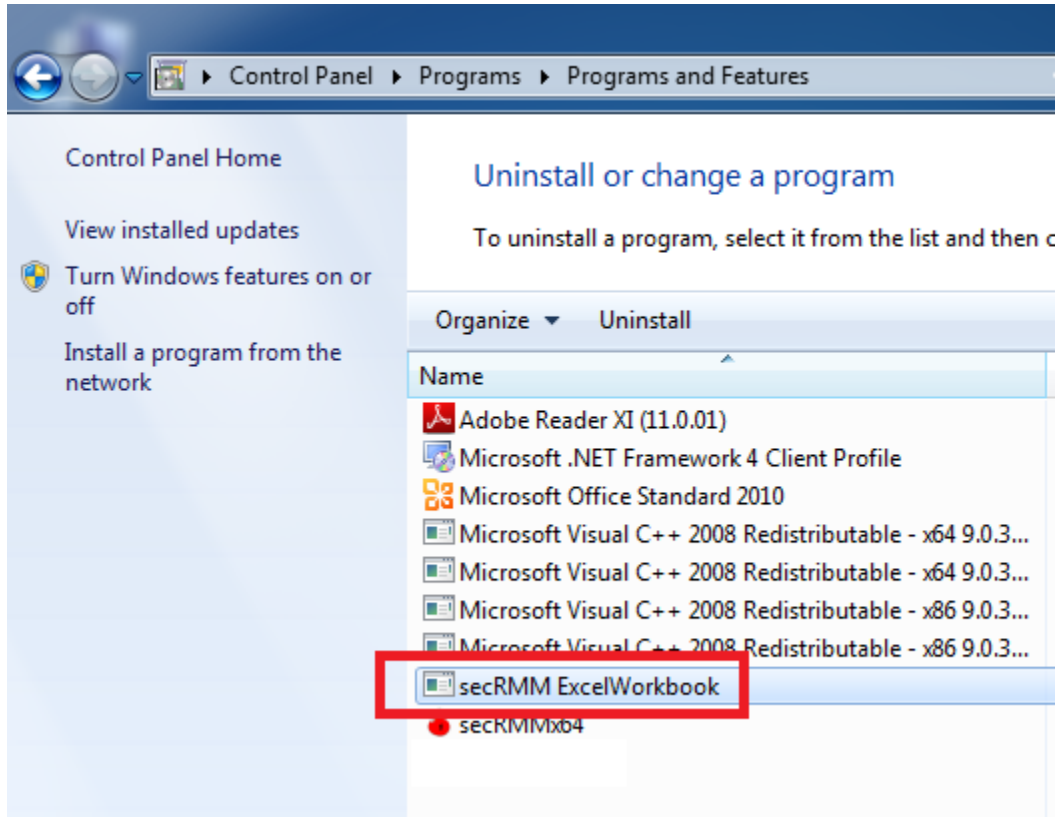


Figure 26 Uninstall

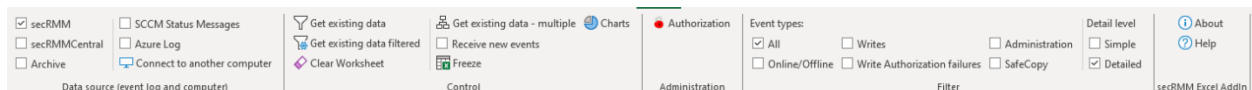
If you later decide to reinstall, you will first need to clear the Microsoft Office AddIn cache. To clear the Microsoft Office AddIn cache, open a CMD window in Administrator mode and type: **rundll32 dfshim CleanOnlineAppCache**. Now perform a fresh install.

Using the secRMM Excel AddIn

Security considerations

The secRMM Excel AddIn populates the worksheet by reading the data out of the secRMM or secRMMCentral event log. This is important to remember because only Administrators are allowed to read this data. Therefore, you must always start Excel under “Run As Administrator” mode and your Windows userid must be in the Administrators group on the computer where the secRMM event log resides. Failure to do this will prevent access to the secRMM and/or secRMMCentral event logs. While this may seem inconvenient, it prevents non-Administrator users from accessing the secRMM events.

secRMM Excel AddIn Ribbon (toolbar)



27 - secRMM Ribbon

secRMM Excel AddIn Administrator Guide

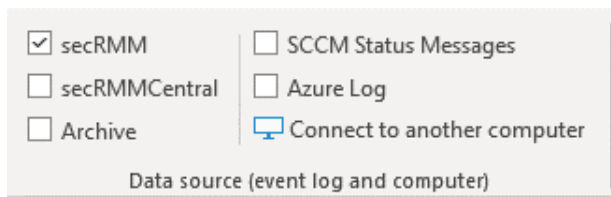
This section will describe the features available in the secRMM Ribbon. The secRMM Ribbon contains all of the additional functionality provided by the secRMM Excel AddIn. In addition, you have access to all of the functionality provided by Excel (filtering, searching, reporting, etc.).

The functionality provided by the secRMM Ribbon is divided into 4 major groups:

1. Data source
2. Control
3. Administration
4. Filter

Each group is described in the sections below.

Data source



28 - secRMM Ribbon Data source group

The secRMM Ribbon Data source group allows you to view secRMM event data for a single computer (secRMM event log) or to view secRMM event data for multiple computers (secRMMCentral event log). Viewing secRMM event data for multiple computers means that you are viewing data from the secRMMCentral event log. The secRMMCentral event log contains secRMM events from multiple computers running the secRMM product. For details on secRMMCentral, please download the secRMMCentral Administrator Guide from the Squadra Technologies web site. You can also view archived secRMM and/or secRMMCentral archive files.

You can also connect to Microsoft System Center Configuration Manager (SCCM) to view the secRMM “status messages”.

You can also connect to your Microsoft Azure tenant to view the secRMM Azure Log Analytics data.

secRMM Checkbox

Checking this checkbox will make the secRMM Excel AddIn look at the secRMM event log on the computer that it is currently connected to.

secRMMCentral Checkbox

Checking this checkbox will make the secRMM Excel AddIn look at the secRMMCentral event log on the computer that it is currently connected to.

secRMM Excel AddIn Administrator Guide

Archive Checkbox

Checking this checkbox will allow you to open a secRMM or secRMMCentral event log as shown below. You can select as many archive files as you want using the Ctrl-Click on each file you want or Ctrl-A to select all the evtx files in a directory.

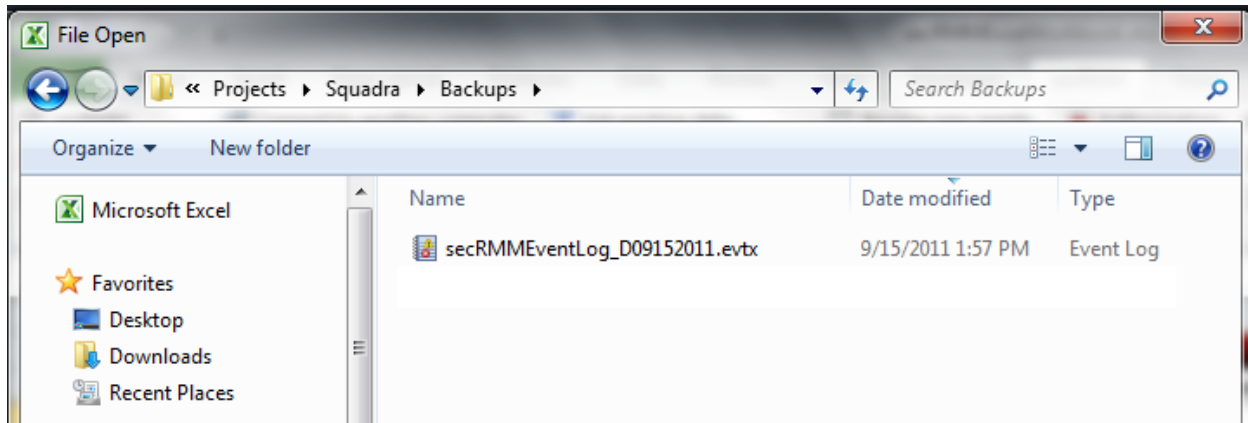


Figure 29 - archived event log file

SCCM Status Messages Checkbox

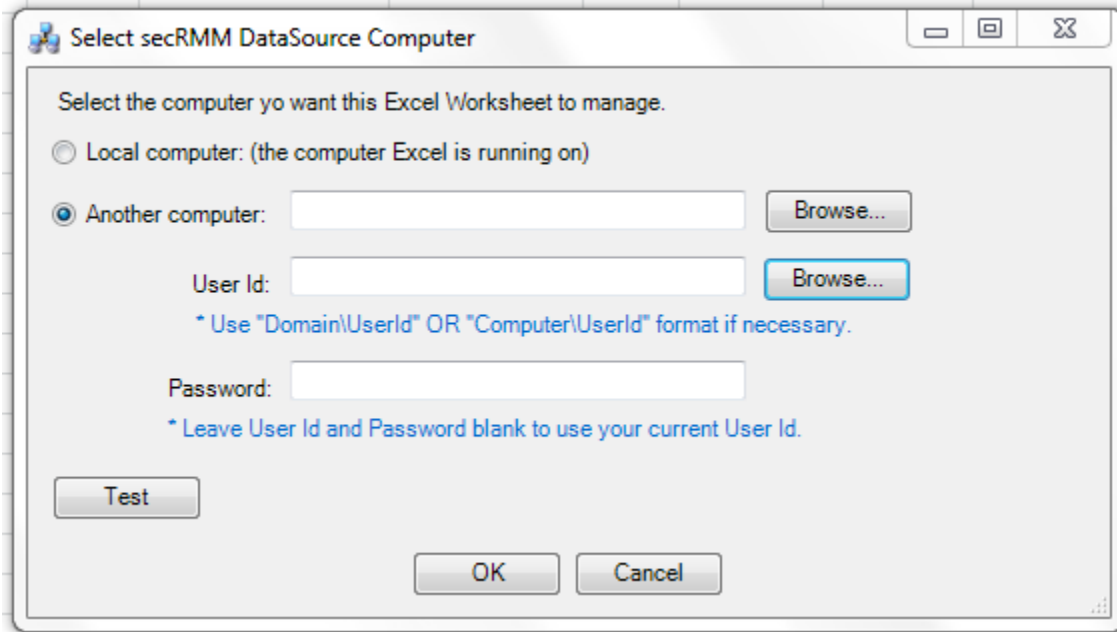
Checking this checkbox will make the secRMM Excel AddIn look at the SCCM status messages for secRMM. The computer running the secRMM Excel AddIn must have secRMM installed on it and the secRMM SCCMConnection property must be configured for this option to work properly.

Azure Log Checkbox

Checking this checkbox will make the secRMM Excel AddIn look at the Azure Log Analytics in your Azure tenant for secRMM. The computer running the secRMM Excel AddIn must have secRMM installed on it and the secRMM SendToAzureLog property must be configured for this option to work properly.

Connect to another computer

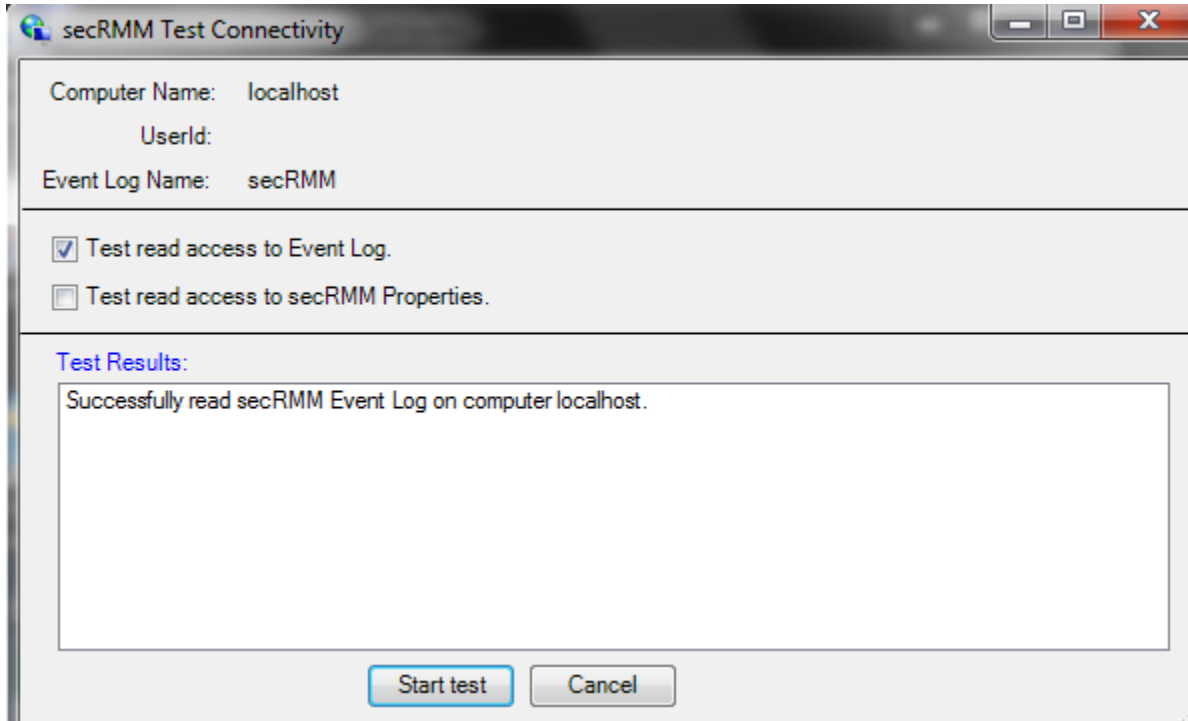
secRMM Excel AddIn Administrator Guide



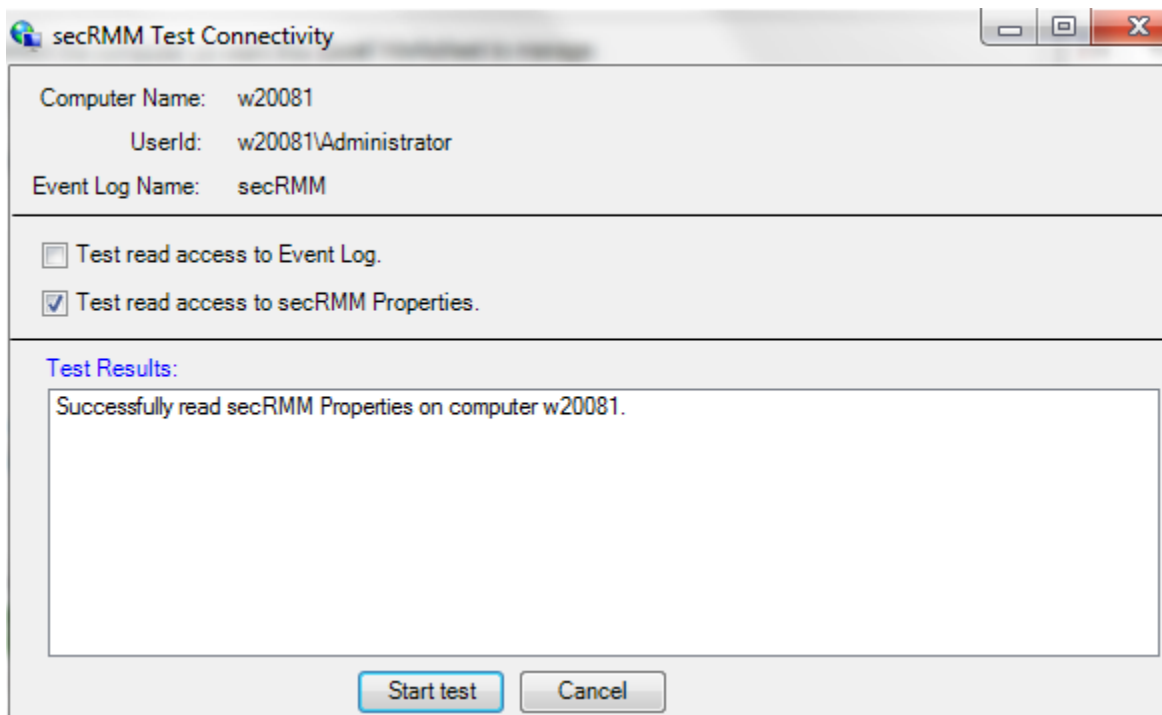
30 - secRMM Connect to another computer dialog

Use this button to connect to a computer running the secRMM product or secRMMCentral. If you connect to a remote computer, you can specify a User Id and Password if necessary. Note that for User Id, you can use NetBios notation to prefix the User Id with either a domain name or with a computer name. Once you select the computer you want to connect to, you can use the “Test” button in the lower left hand corner of the dialog to verify that the information you provided to connect to the computer is valid. The dialog that is displayed when you press the “Test” button is shown below. If the test fails, you should begin troubleshooting by first validating the information you provided. A common mistake is that the userid you specified is not an Administrator on the computer you specified. Also, check the event logs on the remote computer for security errors.

secRMM Excel AddIn Administrator Guide



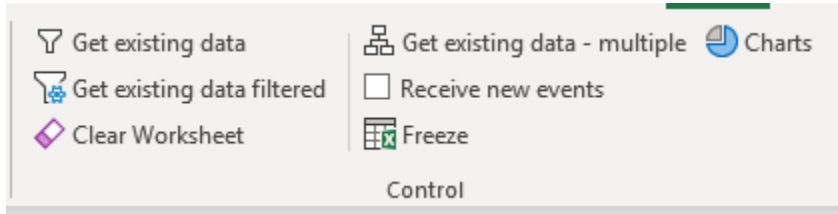
31 - Test connectivity for accessing secRMM event log



32 - Test connectivity for accessing secRMM Properties

The “Test connectivity” dialog provides 2 tests. One is to read the event logs while the other is to allow you to issue authorization commands to secRMM (and to view or change other controlling properties of secRMM).

Control



33 - secRMM Ribbon Control group

The secRMM Ribbon Control group allows you to retrieve data from the data source you selected in the “Data source” group. You also can specify whether you want to take static snapshots of the data or allow the Excel Worksheet to receive new secRMM events in real-time (“Receive new events” checkbox). Lastly, you have a function to clear the worksheet.

Get existing data button

Use this button to get the data from the event log you specified in the Data source group (i.e. from the secRMM or secRMMCentral event log).

Get existing data filtered

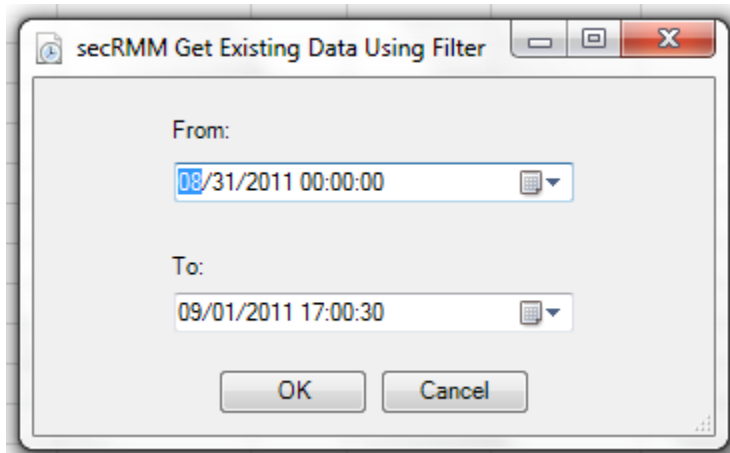


Figure 34 - filtering events by date/time

Use this button to get a subset of the data from the event log you specified in the Data source group (i.e. from the secRMM or secRMMCentral event log). You define the subset of data by specifying a start time and end time. The data returned is between this start time and end time.

Clear Worksheet button

Use this button to clear the data out of the active Worksheet.

Get existing data from multiple computers

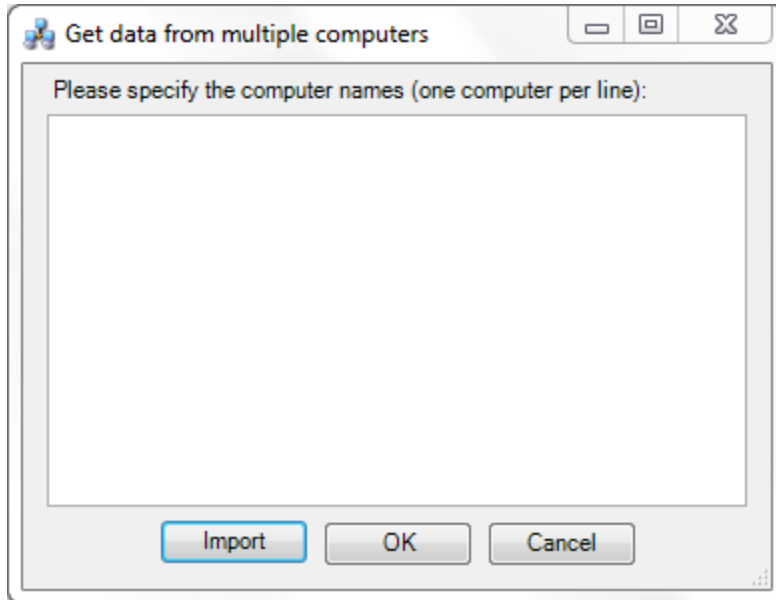


Figure 35 - Get events from multiple computers

Use this button to get the data from the secRMM event log on multiple computers. You put one computer name per line in the windows. If you have an existing list of computer names, you can use the import button.

Receive new events Checkbox

Check this checkbox if you want to receive new secRMM events into the active Worksheet.

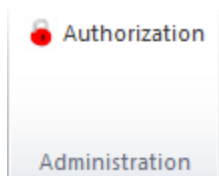
Freeze button

This button acts as a toggle to freeze and unfreeze the “Receive new events” function.

Charts button

This button allows you to chart the secRMM data.

Administration



36 - secRMM Ribbon Administration group

The secRMM Ribbon Administration group lets you control the secRMM software on the computer that you are connected to in the “Data source” group. This allows you to control either the local computer you are running Excel on or another computer in your environment.

secRMM Excel AddIn Administrator Guide

Authorization button

The list of secRMM properties and their values are displayed. You can click the editable properties to change the value. Note that from this dialog, you can also invoke the SafeCopy Approver and Device Tracker programs. One limitation of using the Authorization dialog from within the secRMM Excel AddIn is that you can only change the secRMM computer configuration. If you want to change a secRMM user configuration, you must use the secRMM MMC. Also, since EnableRMS, SCCMConnection and SendEmail take passwords, these secRMM properties cannot be changed in the Excel AddIn.

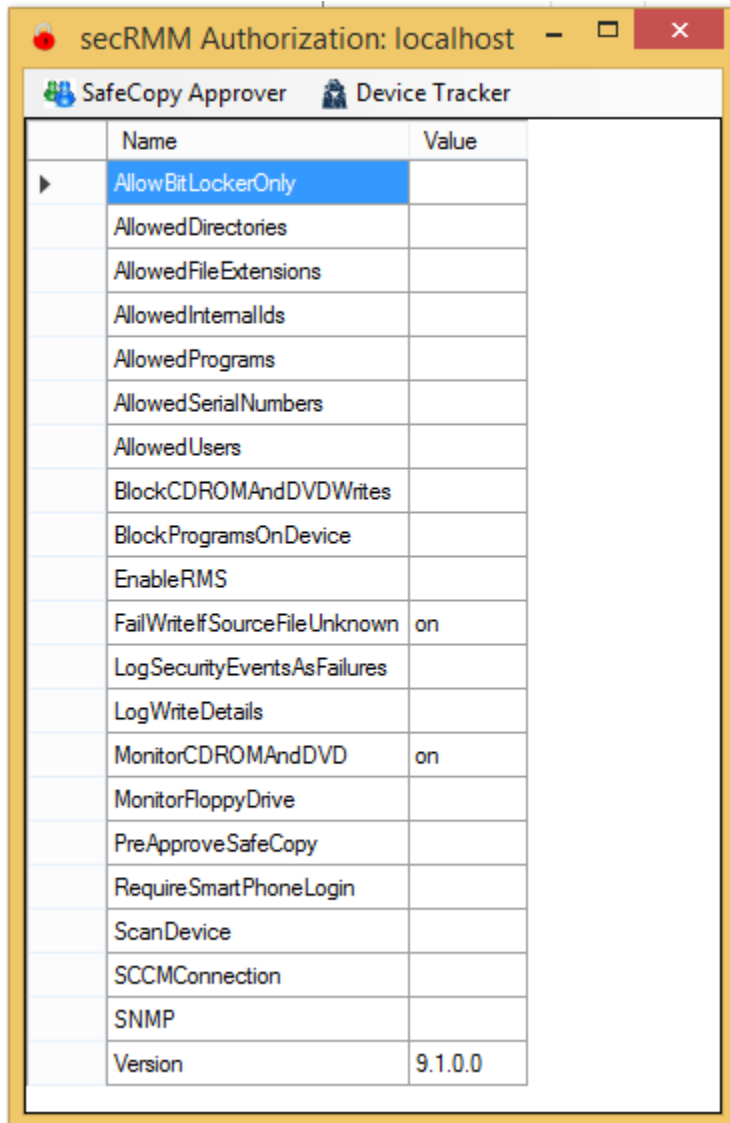
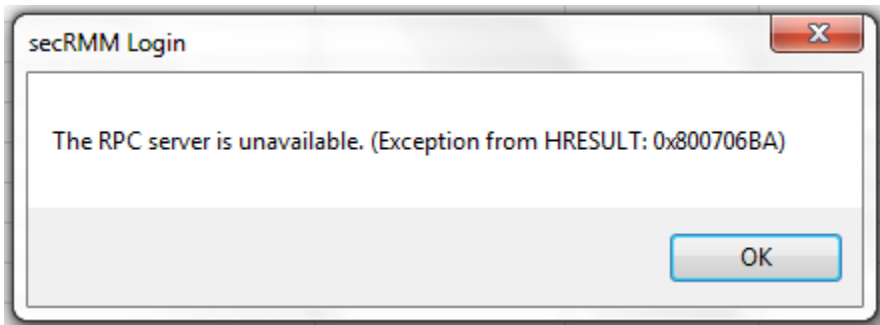


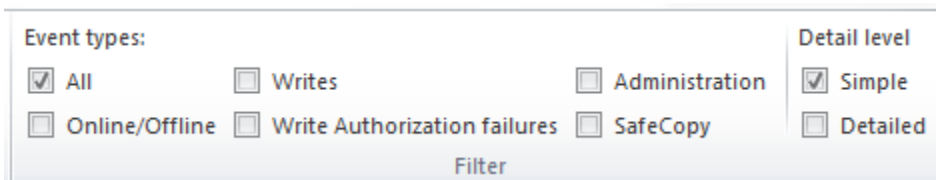
Figure 37 - secRMM Authorization dialog

If you receive an error using the Authorization button, check the computer you are working with to ensure the firewall has been opened for remote administration. The error you will see is most likely "The RPC server is unavailable" (shown below). To resolve this error, type the following command on the computer you are working with: **Netsh firewall set service RemoteAdmin.**



38 - Firewall blocking remote administration

Filter



39 - secRMM Ribbon Filter group

The secRMM Ribbon Filter group lets you control what secRMM events are displayed in the active Worksheet and also to control the level of detail for each secRMM event in the active Worksheet.

Event types

All Checkbox

Check this checkbox to show all the secRMM events in the active Worksheet.

Online/Offline Checkbox

Check this checkbox to show secRMM Online/Offline events in the active Worksheet. When a Removable Media Device is plugged in and the Windows Operating System recognizes it, a secRMM Online event occurs. When a Removable Media Device is unplugged and the Windows Operating System removes it from its list of active devices, a secRMM Offline event occurs.

Writes Checkbox

Check this checkbox to show secRMM write events in the active Worksheet. A secRMM write event is generated when data is written to a Removable Media Device.

Write Authorization failures Checkbox

Check this checkbox to show secRMM write authorization failures. A secRMM write authorization failure is a secRMM event that fails a write attempt to a Removable Media Device due to a secRMM authorization rule. A secRMM authorization rule is based upon one or more criteria:

1. User Id
2. Program

secRMM Excel AddIn Administrator Guide

3. Removable Media Device serial number

Administration Checkbox

Check this checkbox to show secRMM Administration events. A secRMM Administration event is an event which logs when an Administrator changes one of the secRMM authorization rules or any of the properties which control how the secRMM program behaves.

SafeCopy Checkbox

Check this checkbox to show the secRMM SafeCopy events. A secRMM SafeCopy event is an event which logs when an end-user is using removable media.

Detail level

Simple Checkbox

Check this checkbox to display the secRMM data at an Executive level. Specifics about the secRMM events are hidden.

Detailed Checkbox

Check this checkbox to display all of the secRMM event data.

secRMM Excel Data Columns

This section lists and describes the Excel columns that are defined in the secRMM Excel Workbook. All of this data is derived from the secRMM or secRMMCentral event logs. From anywhere in the Workbook, you can double click a row to show that row in its own windows as shown below.

secRMM Excel AddIn Administrator Guide

Name	Value
Event	write completed
Time	09/30/2011 07:53:41 AM
User	Tony-PC\Tony
Device Description	Removable Disk
Serial Number	2CB43506
Model	SMI USB DISK USB Device
Source File	D:\Projects\Squadra\Backups\D09282011_v1_0_10_0_CODE.zip

40 - Viewing a single row of the Worksheet

Event	This is the event ID translated into meaningful text.
Time	The date and time the event occurred.
Computer	The computer where the event occurred. For the secRMM event log, this will always list the same computer. For secRMMCentral, it will have all the computers that are forwarding their secRMM events into the secRMMCentral event log.
Configuration Target	The name of the secRMM configuration which is either a computer or user configuration (policy).
User	The user that is associated with the event.
User SID	The user SID that is associated with the event.
Drive	The drive letter of the removable media device.
Volume	The volume name of the removable media device.
Device Description	The removable media device description.
Serial Number	The removable media device's serial number.
Model	The manufacturer model of the removable media device.
Internal ID	The internal ID of the removable media device.
Target File	The name of the file as it is stored on the removable media device.
Source File	The source file involved in the write operation to the removable media device.
Source File Size	The source file size in bytes.
Source File Last Write	The source file date and time that it was last written to.
Program Name	The name of the program used to perform the write operation to the removable media device.
Program PID	The program PID.
Additional Program Info	Additional program information (used in cmd.exe, powershell, vbscript and jscript programs).
Message	Any additional information secRMM generates for the event

secRMM Excel AddIn Administrator Guide

Property Name	For Administration events, the name of the property involved in the event.
Property Action	For Administration events, the action taken on the property involved in the event.
Property Value	For Administration events, the value of the property.
Previous Property Value	For Administration events, the previous value of the property.
Property Target	For Administration events, this will specify either the computer configuration or a user configuration. If it is a user configuration, it will list the userid and the users SID.
Property Operation Status	For Administration events, the outcome of the event (i.e. successful or unsuccessful).

Contacting Squadra Technologies Support

Squadra Technologies Support is available to customers who have purchased a commercial version of secRMM and have a valid maintenance contract or who are in a trial mode of the product.

When you contact Support please include the following information:

1. The version of secRMM you have installed.
2. The Windows versions you have installed: XP, 2003 Server, 2008 Server R2, Vista, Windows 7, etc.
3. Whether the Windows Operating System is 32bit or 64bit.
4. The specific issue you are contacting support for.

About Squadra Technologies, LLC.

Squadra Technologies delivers innovative products that help organizations get more data protection within the computer infrastructure. Through a deep expertise in IT operations and a continued focus on what works best, Squadra Technologies is helping customers worldwide.

Contacting Squadra Technologies, LLC.

Phone 562.221.3079 (United States and Canada)
Email info@squadratechnologies.com
Mail Squadra Technologies, LLC.
World Headquarters
7575 West Washington Ave. Suite 127-252
Las Vegas, NV 89128
USA
Web site <http://www.squadratechnologies.com/>